

ONLINE SUPPLEMENTARY MATERIAL

Table S1. Food items and their absolute (AF), occurrence (FO) and relative (RF) frequencies in fecal samples of the hoary fox (*Lycalopex vetulus*), the crab-eating fox (*Cerdocyon thous*) and the maned wolf (*Chrysocyon brachyurus*) in an unprotected and human-modified Cerrado region in Brazil. Data were collected along seven years and pooled for the calculation of the frequencies of each food item.

Food items	<i>L. vetulus</i> (n=65)			<i>C. thous</i> (n=60)			<i>C. brachyurus</i> (n=30)		
	AF	FO	RF	AF	FO	RF	AF	FO	RF
	(n)	(%)	(%)	(n)	(%)	(%)	(n)	(%)	(%)
PLANTS (sum)	25		13.7	40		24.2	30		36.6
Ebenaceae									
<i>Diospyros sp</i>				1	1.7	0.6			
Fabaceae n.i.	1	1.5	0.5						
Rubiaceae									
<i>Genipa americana</i>	1	1.5	0.5	1	1.7	0.6			
Rubiaceae n.i.				1	1.7	0.6			
Myrtaceae									
<i>Psidium guajava</i>	9	13.8	4.9	4	6.7	2.4	3	10.0	3.7
Myrtaceae n.i.	1	1.5	0.5				1	3.3	1.2
Moraceae									
<i>Ficus sp1</i>	2	3.1	1.1	3	5.0	1.8	1	3.3	1.2
<i>Ficus sp2</i>	1	1.5	0.5	2	3.3	1.2			
Sapindaceae n.i.				2	3.3	1.2			
Solanaceae									
<i>Solanum lycocarpum</i>							18	60.0	22.0
Solanaceae n.i.							1	3.3	1.2
Arecaceae									
<i>Syagrus sp</i>	3	4.6	1.6	3	5.0	1.8	1	3.3	1.2

Poaceae	5	7.7	2.7	6	10.0	3.6	2	6.7	2.4
Plants n.i.	2	3.1	1.1	17	28.3	10.3	3	10.0	3.7
INSECTS (sum)	145		79.2	99		60.0	11		13.4
Coleoptera									
Carabidae	1	1.5	0.5						
Crisomelidae	1	1.5	0.5						
Scarabaeidae	46	70.8	25.1	41	68.3	24.8	1	3.3	1.2
Staphylinidae				1	1.7	0.6			
Diptera									
Sarcophagidae				5	8.3	3.0	2	6.7	2.4
Stratiomyidae				3	5.0	1.8	2	6.7	2.4
Diptera n.i.				4	6.7	2.4			
Hemiptera									
Reduviidae	1	1.5	0.5						
Hymenoptera									
Formicidae	1	1.5	0.5	3	5.0	1.8			
Isoptera	46	70.8	25.1	1	1.7	0.6			
Orthoptera	43	66.2	23.5	41	68.3	24.8	5	16.7	6.1
Insects n.i.	6	9.2	3.3				1	3.3	1.2
ANURANS (sum)				1		0.6			
n.i.				1	1.7	0.6			
SQUAMATES (sum)	1		0.5	2		1.2	2		2.4
n.i.	1	1.5	0.5	2	3.3	1.2	2	6.7	2.4
BIRDS (sum)	2		1.1	2		1.2	18		22.0
Passeriformes	1	1.5	0.5				17	56.7	20.7
Non-Passeriformes	1	1.5	0.5	2	3.3	1.2	1	3.3	1.2
MAMMALS (sum)	10		5.5	21		12.7	21		25.6
Didelphidae									

<i>Didelphis albiventris</i>	1	1.5	0.5	1	1.7	0.6			
<i>Gracilinanus sp</i>	3	4.6	1.6	3	5.0	1.8	2	6.7	2.4
Caviidae									
<i>Cavea sp</i>							1	3.3	1.2
Cricetidae									
<i>Calomys sp</i>	1	1.5	0.5	1	1.7	0.6	1	3.3	1.2
<i>Necomys sp</i>							1	3.3	1.2
<i>Hylaeamys megacephalus</i>				1	1.7	0.6			
<i>Oligoryzomys sp</i>							2	6.7	2.4
Rodents n.i.	5	7.7	2.7	15	25.0	9.1	14	46.7	17.1
TOTAL	183		100	165		100	82		100

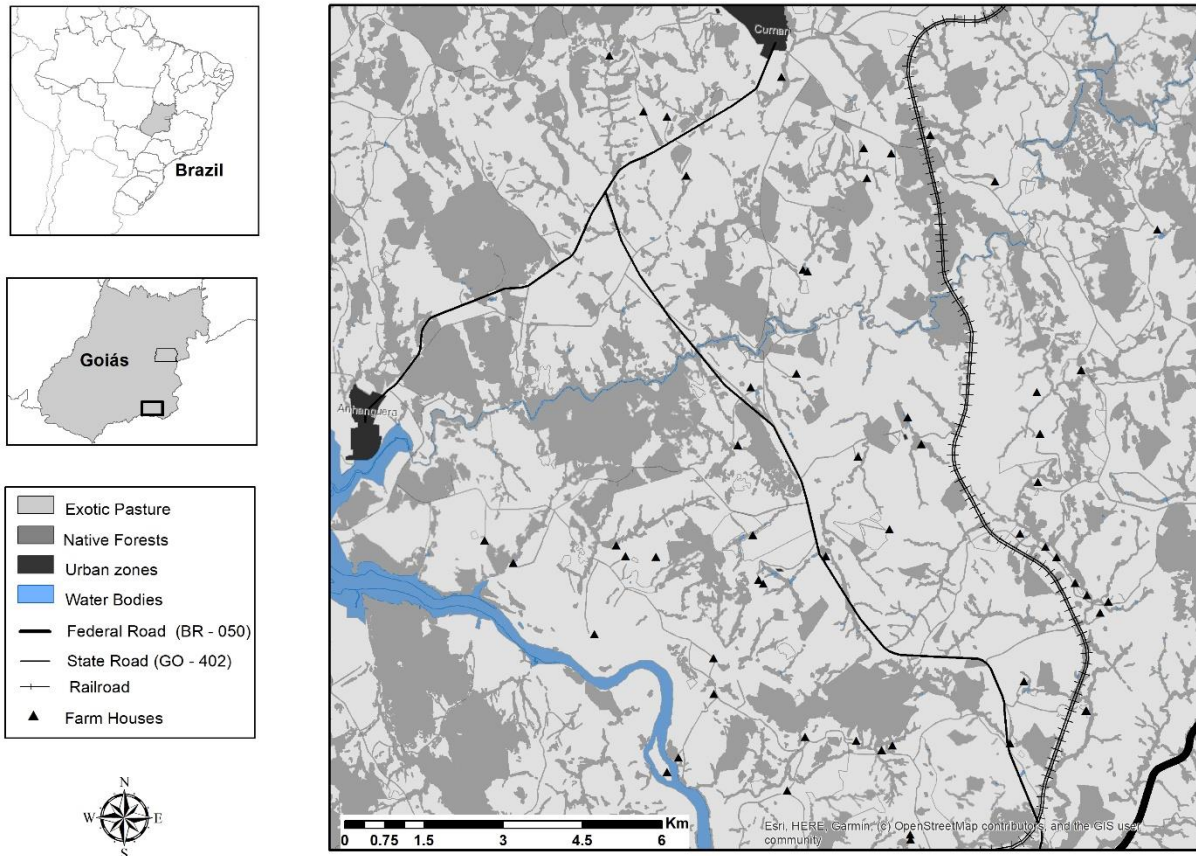


Fig. S1. Map of the study site within the Limoeiro region, located in the municipality of Cumari, Goiás state, Brazil. The original Cerrado area is currently dominated by cattle ranching properties and widespread patches of Cerrado vegetation.